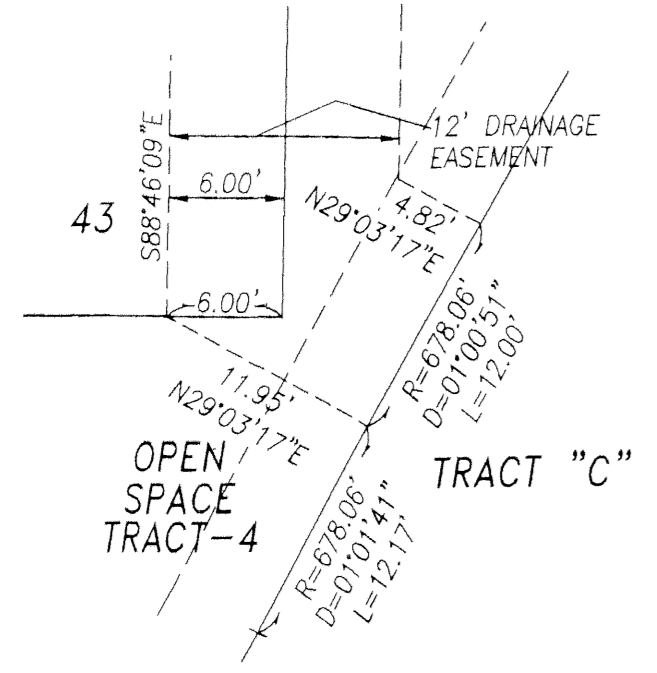
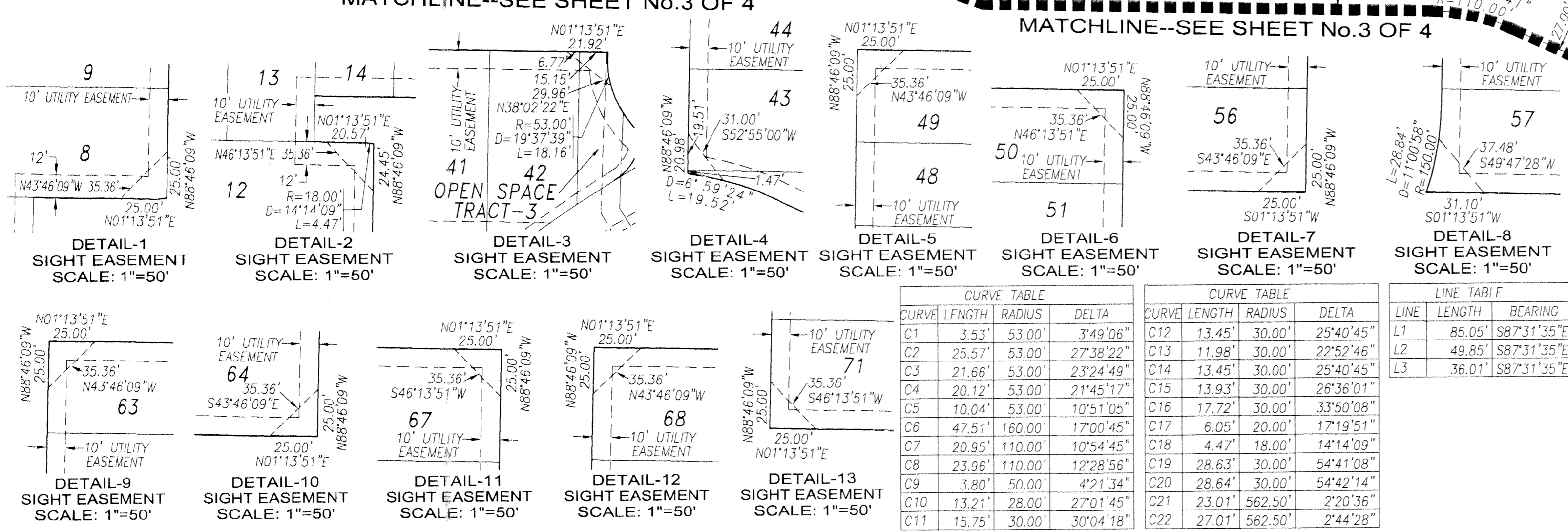
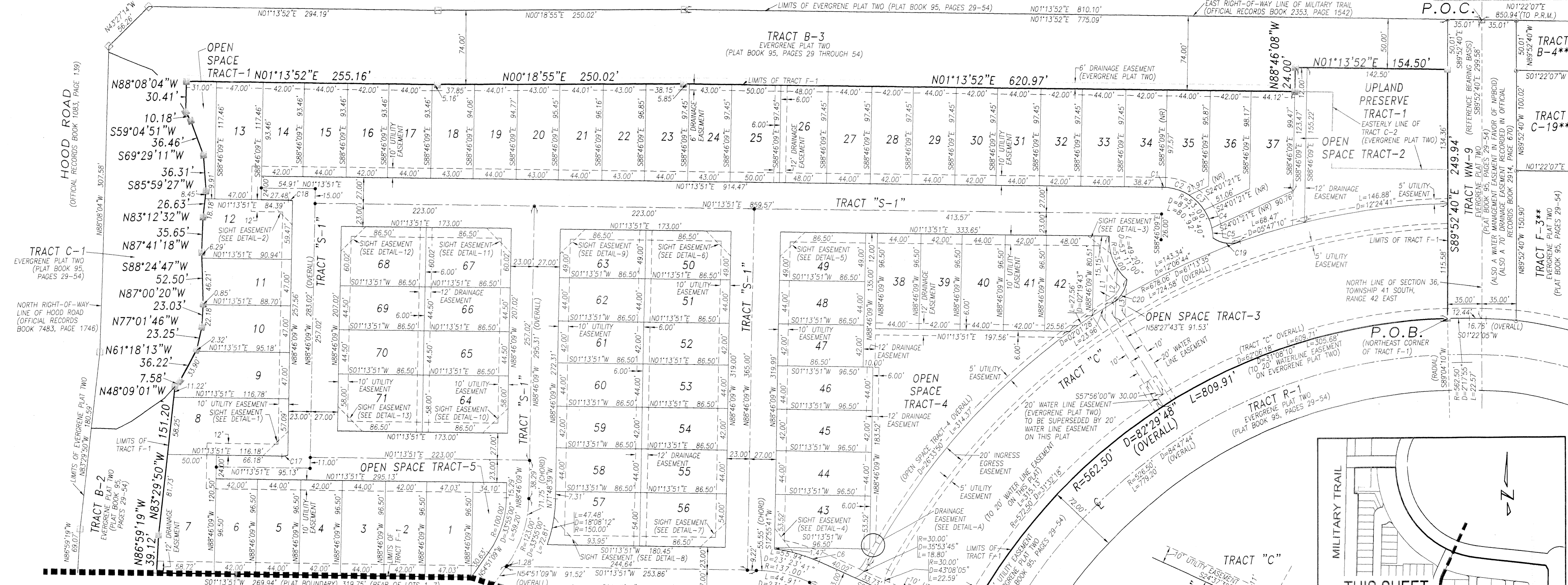
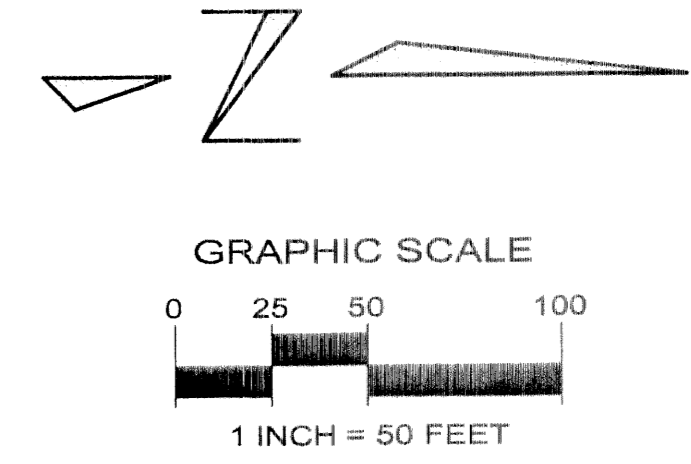


EVERGRENE P.C.D. PLAT THREE

A REPLAT OF TRACTS F-1 AND C-2, EVERGRENE PLAT TWO AS RECORDED IN PLAT BOOK 95, PAGES 29 THROUGH 54, PUBLIC RECORDS OF PALM BEACH COUNTY, FLORIDA LYING IN THE NORTHEAST QUARTER OF SECTION 36, TOWNSHIP 41 SOUTH, RANGE 42 EAST, CITY OF PALM BEACH GARDENS, PALM BEACH COUNTY, FLORIDA
SHEET No.4 OF 4 JULY 2002



DETAIL-A DRAINAGE EASEMENT TIE SCALE: 1"=10'

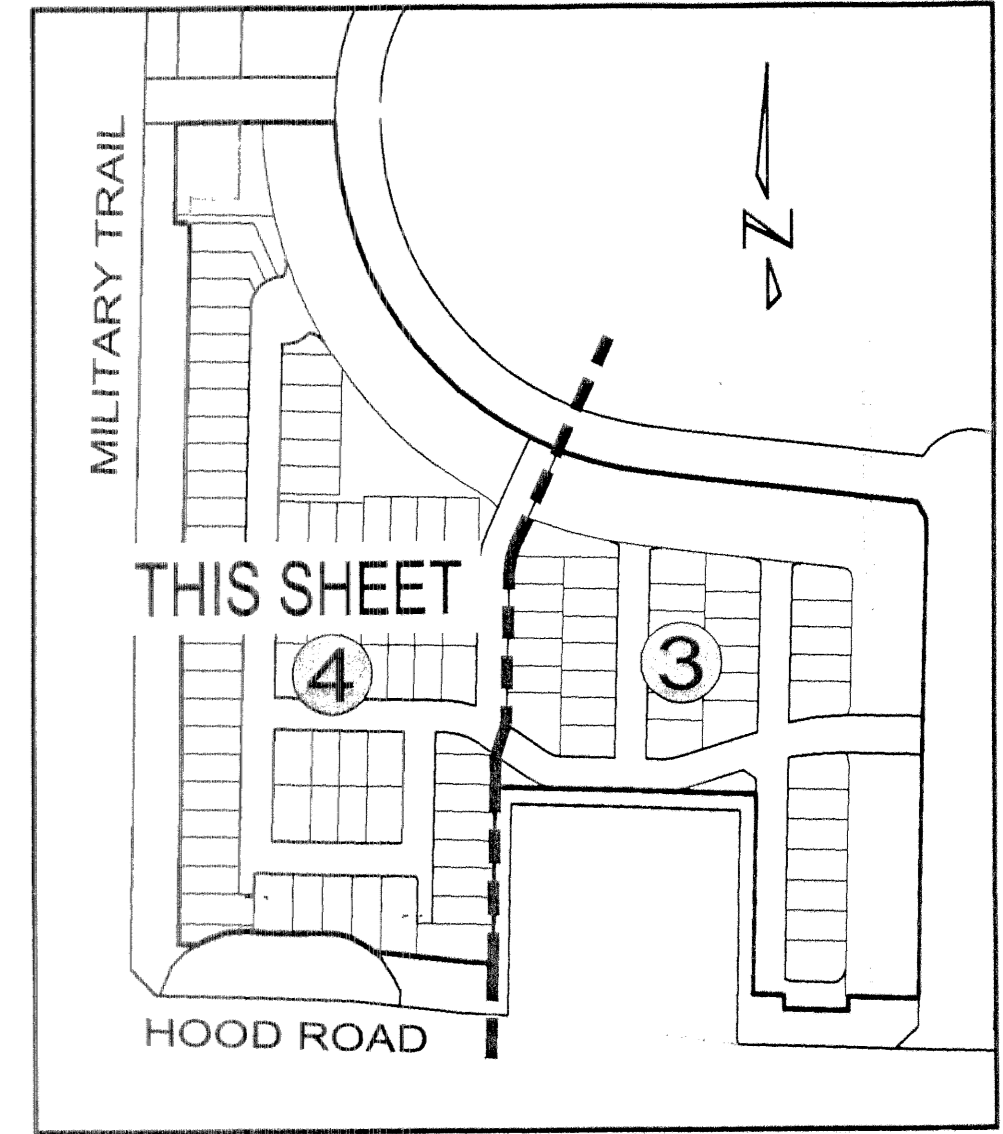


SYMBOLS LEGEND

- SET PERMANENT REFERENCE MONUMENT (P.R.M.) "L.B. 4897"
- PERMANENT CONTROL POINT (P.C.P.)
- NORTHERN PALM BEACH COUNTY IMPROVEMENT DISTRICT
- RADIUS
- D CENTRAL ANGLE
- L ARC LENGTH
- INT INTERSECTION
- CP CENTERLINE
- P.O.B. POINT OF BEGINNING
- P.O.C. POINT OF COMMENCING
- CHANGE IN DIRECTION
- P.S.M. PROFESSIONAL SURVEYOR AND MAPPER
- P.C. POINT OF CURVATURE
- NR NON-RADIAL LOT LINE
- PERMANENT REFERENCE MONUMENT (P.R.M.) "L.B. 2936"
- CHANGE OF DIRECTION PER EVERGRENE PLAT TWO
- PER EVERGRENE PLAT TWO (PLAT BOOK 95, PAGES 29-54)

*NOTE: ALL LOT LINES ARE RADIAL UNLESS OTHERWISE SPECIFIED.

| CURVE TABLE | | | | CURVE TABLE | | | | LINE TABLE | | |
|-------------|--------|---------|-----------|-------------|--------|---------|-----------|------------|--------|-------------|
| CURVE | LENGTH | RADIUS | DELTA | CURVE | LENGTH | RADIUS | DELTA | LINE | LENGTH | BEARING |
| C1 | 3.53' | 53.00' | 3'49.06" | C12 | 13.45' | 30.00' | 25'40.45" | L1 | 85.05' | S87°31'35"E |
| C2 | 25.57' | 53.00' | 2'38.22" | C13 | 11.98' | 30.00' | 22°52.46" | L2 | 49.85' | S87°31'35"E |
| C3 | 21.66' | 53.00' | 2'32.49" | C14 | 13.45' | 30.00' | 25'40.45" | L3 | 36.01' | S87°31'35"E |
| C4 | 20.12' | 53.00' | 2'14.51" | C15 | 13.93' | 30.00' | 26°36.01" | | | |
| C5 | 10.04' | 53.00' | 1'05.10" | C16 | 17.72' | 30.00' | 33°50.08" | | | |
| C6 | 47.51' | 160.00' | 17'00.45" | C17 | 6.05' | 20.00' | 17°19.51" | | | |
| C7 | 20.95' | 110.00' | 10'54.45" | C18 | 4.47' | 18.00' | 14°14.09" | | | |
| C8 | 23.96' | 110.00' | 12'28.56" | C19 | 28.63' | 30.00' | 54°41.08" | | | |
| C9 | 3.80' | 50.00' | 4'21.34" | C20 | 28.64' | 30.00' | 54°42.14" | | | |
| C10 | 13.21' | 28.00' | 2'70.14" | C21 | 23.01' | 562.50' | 2'20.38" | | | |
| C11 | 15.75' | 30.00' | 3'04.18" | C22 | 27.01' | 562.50' | 2'44.28" | | | |



Keshavarz & Associates, Inc.
 CONSULTING ENGINEERS - SURVEYORS
 1280 N. Congress Avenue, Suite 206
 West Palm Beach, Florida 33409
 Tel: (561) 689-8600 Fax: (561) 689-7476 LB 4897
 THIS INSTRUMENT WAS PREPARED BY MANUEL A. GUTIERREZ, PSM
 PROFESSIONAL SURVEYOR AND MAPPER NO. 4102
 IN THE OFFICES OF KESHAVARZ & ASSOCIATES, INC.